

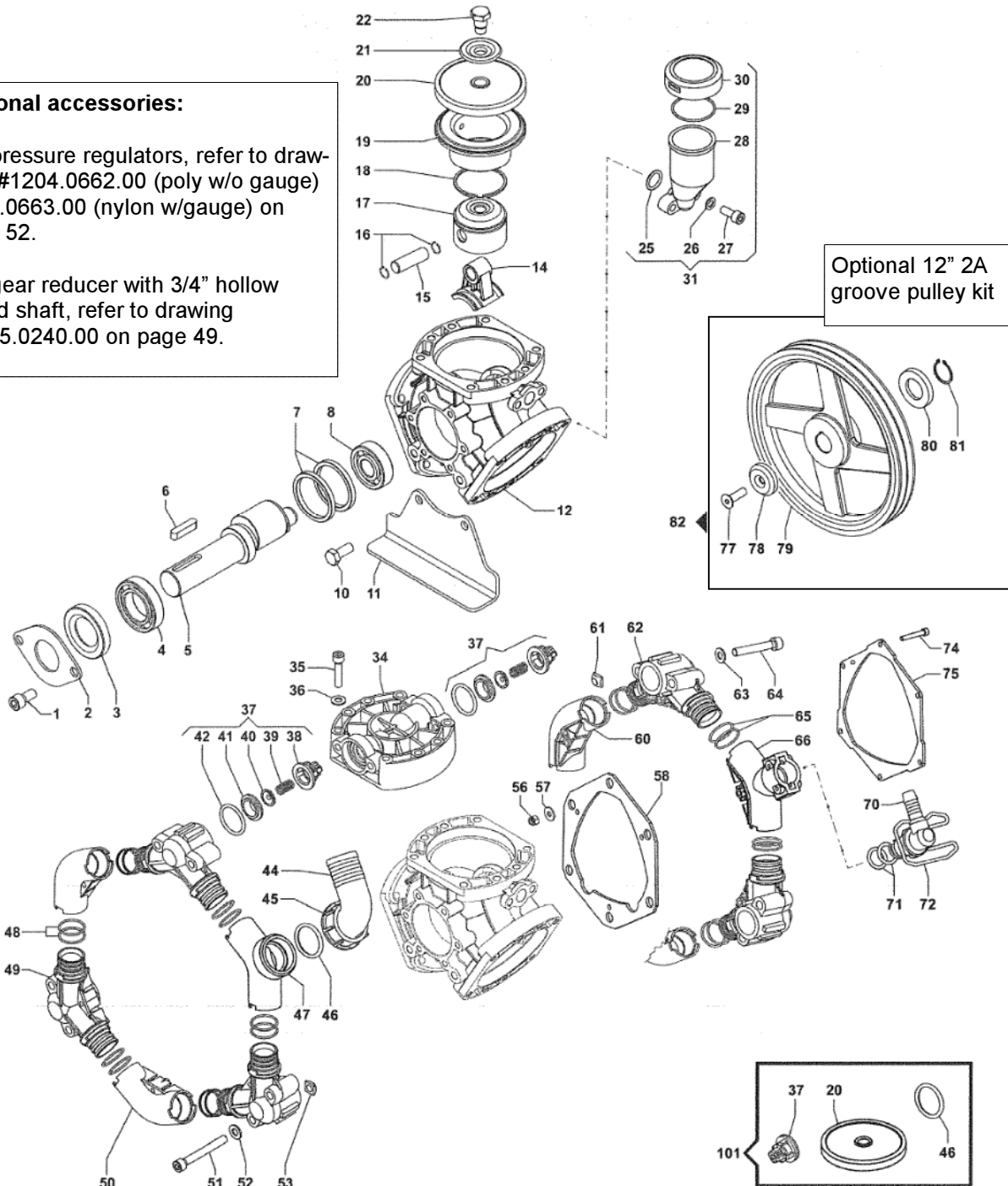


P36

Optional accessories:

For pressure regulators, refer to drawings #1204.0662.00 (poly w/o gauge) 1204.0663.00 (nylon w/gauge) on page 52.

For gear reducer with 3/4" hollow keyed shaft, refer to drawing #5005.0240.00 on page 49.



P36

PRICES SUBJECT TO CHANGE WITHOUT NOTICE.

#	PART #	DESCRIPTION	NOTE	QTY
1	3609.0171.00	SCREW	M10x16	2
2	1004.0013.00	FLANGE		1
3	0019.0101.00	OIL SEAL	30x62x7	1
4	0438.0016.00	BALL BEARING	30x62x16	1
5	0001.0554.00	NON-THROUGHSHAFT	30-CIL	1
6	1602.0018.00	KEY	8X7x40	1
7	0010.0013.00	CONNECTING ROD RING	60x50X6	2
8	0438.0066.00	BALL BEARING	20x52x15	1
10	3607.0221.00	HEXAGONAL SCREW	M10x20	4
11	2400.0105.00	PUMP MOUNTING BRACKET		2
12	0403.0163.00	PUMP CRANKCASE		1
14	0205.0075.00	CONNECTING ROD ASS.Y	3 PCS	1
15	3011.0021.00	CONNECTING ROD PIN		3
16	3020.0029.00	RETAINING CLIP		6
17	2409.0067.00	PISTON	58	3
18	0020.0008.00	COMPRESSION RING	58x2x2,3	3
19	0400.0085.00	PISTON SLEEVE	58	3
20	1800.0088.00	P36/10 DIAPHRAGM	BUNA	3
	1800.0096.00	P36/15 DIAPHRAGM	DESMOPAN	3
21	0602.0043.00	P36/10 DISC	POLYPRO	3
	0602.0010.00	P36/15 DISC		3
22	3605.0116.00	P36/10 SPECIAL SCREW	AISI 316L	3
	3605.0005.00	P36/15 SPECIAL SCREW		3
25	1210.0233.00	O-RING	1X78x18,77	1
26	2811.0099.00	WASHER	8,4x15x1,6	2
27	3609.0203.00	SCREW	M8x25	2
28	0421.0015.00	VOLUMETRIC COMPENSATOR		1
29	1210.0122.00	O-RING	2,62X44,12	1
30	0402.0141.00	CAP		1
31	1208.0013.00	OIL CUP ASSEMBLY		1
34	3218.0376.00	P36/10 PUMP MANIFOLD	POLYPRO	3
	3218.0360.00	P36/15 PUMP MANIFOLD		3
35	3609.0156.00	SCREW	M8x55	24
36	2811.0099.00	WASHER	8,4X15x1,6	24
37	1220.0071.00	P36/10 SUCT./DEL. VALVE		6
	1220.0070.00	P36/15 SUCT./DEL. VALVE		6
38	1205.0044.00	P36/10 SUCT./DEL. VALVE CAGE	POLYPRO	6
	1205.0029.00	P36/15 SUCT./DEL VALVE CAGE		6
39	1802.0015.00	SPRING (WIRE 0,8)		6
40	3604.0033.00	P36/10 SUCT./DEL VALVE	AISI 316L	6
	3604.0023.00	P36/15 SUCT./DEL VALVE		6
41	3009.0160.00	P36/10 SUCT./DEL VALVE SEAT	AISI 316L	6
	3009.0154.00	P36/15 SUCT./DEL VALVE SEAT		6
42	1210.0576.00	P36/10 O-RING VITON	3,53x31,34	6
	1210.0487.00	P36/15 O-RING	3,53x31,34	6
44	2801.0090.00	ELBOW SUCTION COUPLING	25-1"1/2	1

#	PART #	DESCRIPTION	NOTE	QTY
45	1200.0054.00	WING NUT	1"1/2	1
46	1210.0210.00	P36/10 O-RING VITON	3,0x29	1
	1210.0180.00	P36/15 O-RING	3,0X29	1
47	2803.0534.00	P36/10 SUCT. COUPLING	POLYPRO	1
	2803.0522.00	P36/15 SUCT. COUPLING		1
48	1210.0604.00	O-RING VITON	3,0x24	12
49	2806.0030.00	P36/10 OUTLET COLLECTORS	POLYPRO	3
	2806.0029.00	P36/15 OUTLET COLLECTORS		3
50	2803.0531.00	P36/10 CONNECTION COUPLING	POLYPRO	2
	2803.0521.00	P36/15 CONNECTION COUPLING		2
51	3609.0206.00	SCREW	M8x65	6
52	2811.0099.00	WASHER	8,4x15x1,6	6
53	0600.0064.00	SPECIAL NUT	M8	6
56	0604.0103.00	NUT	M5x6,3	6
57	2811.0129.00	WASHER	5,3x15x1,2	6
58	0009.0321.00	BACK FLANGE		1
60	2803.0531.00	P36/10 CONNECTION COUPLING	POLYPRO	2
	2803.0521.00	P36/15 CONNECTION COUPLING		2
61	0600.0064.00	SPECIAL NUT	M8	6
62	2806.0030.00	P36/10 SUCTION COLLECTORS	POLYPRO	3
	2806.0029.00	P36/15 SUCTION COLLECTORS		3
63	2811.0099.00	WASHER	8,4X15x1,6	6
64	3609.0206.00	SCREW	M8x65	6
65	1210.0604.00	O-RING VITON	3,0x24	12
66	2803.0532.00	P36/10 OUTLET COUPLING	POLYPRO	1
	2803.0523.00	P36/15 OUTLET COUPLING		1
70	2803.0554.00	P36/10 ELBOW POLYPRO	3/4"	1
	2803.0027.00	P36/15 ELBOW	3/4"	1
71	1210.0064.00	P36/10 O-RING VITON	2,62X20,7	2
	1210.0002.00	P36/15 O-RING	2,62x20,7	2
72	1202.0060.00	DELIVERY HOOK		1
74	3609.0207.00	SCREW	M5x35	6
75	0009.0323.00	FRONT FLANGE		1

#	PART #	DESCRIPTION	NOTE	QTY
77	3621.0014.00	SPECIAL SCREW	M10X 30	1
78	2812.0090.00	WASHER		1
79	2424.0049.00	PULLEY	2A -p300mm	1
80	0601.0318.00	SPACER		1
81	3019.0003.00	CLIP		1
82	5001.0073.00	PULLEY KIT	2A -p300mm	1

#	PART #	DESCRIPTION	NOTE	QTY
101	5026.0325.00.BN	P36/10 REBUILD KIT	BUNA	1
	5026.0324.00	P36/15 REBUILD KIT	DES	1